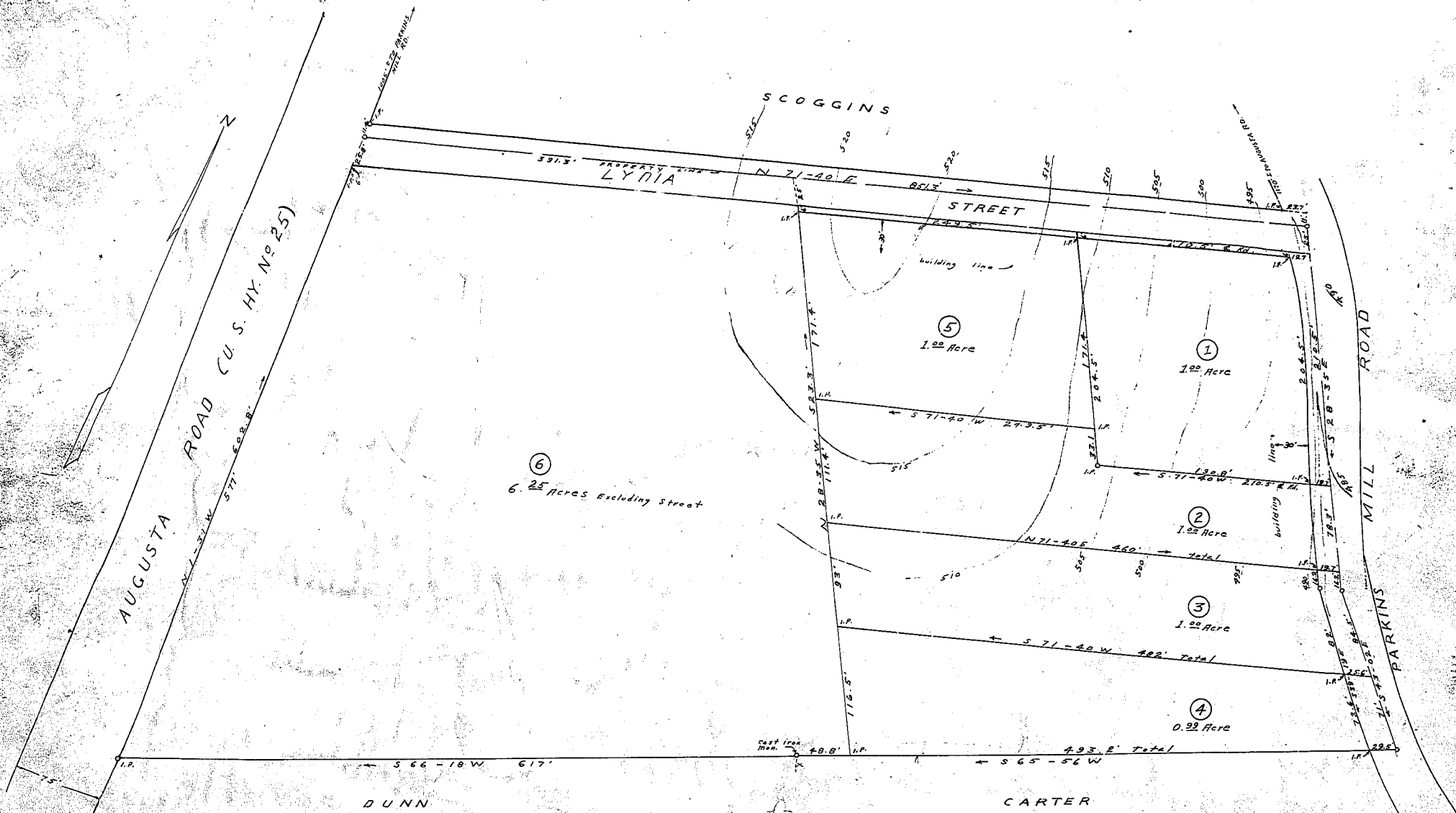


# Plat Book-GG-Page 17



NOTE: TOP OF CAST IRON MONUMENT AT DUNN AND CARTER CORNER ON SOUTH LINE USED AS B.M. ASSUMED ELEVATION 500.

REDEEMER HEIGHTS  
 PROPERTY OF  
 W. J. SULLIVAN  
 NEAR GREENVILLE S. C.  
 SCALE 1" = 50' OCT. 1951  
 CONTOUR INTERVAL 5'

OCT 23 1953

FINAL PLAN APPROVED  
 GREENVILLE CITY PLANNING & ZONING COMMISSION  
 SEP 21 1953  
 SECRETARY OF COMMISSION

Field Book D-51

M 1511-2

W. J. Riddle - Surveyor

#33199...  
 And Remanded to...  
 F.M.  
 Registrar, Greenville County, S. C.